

WELCOME TO **PAKKO** 101

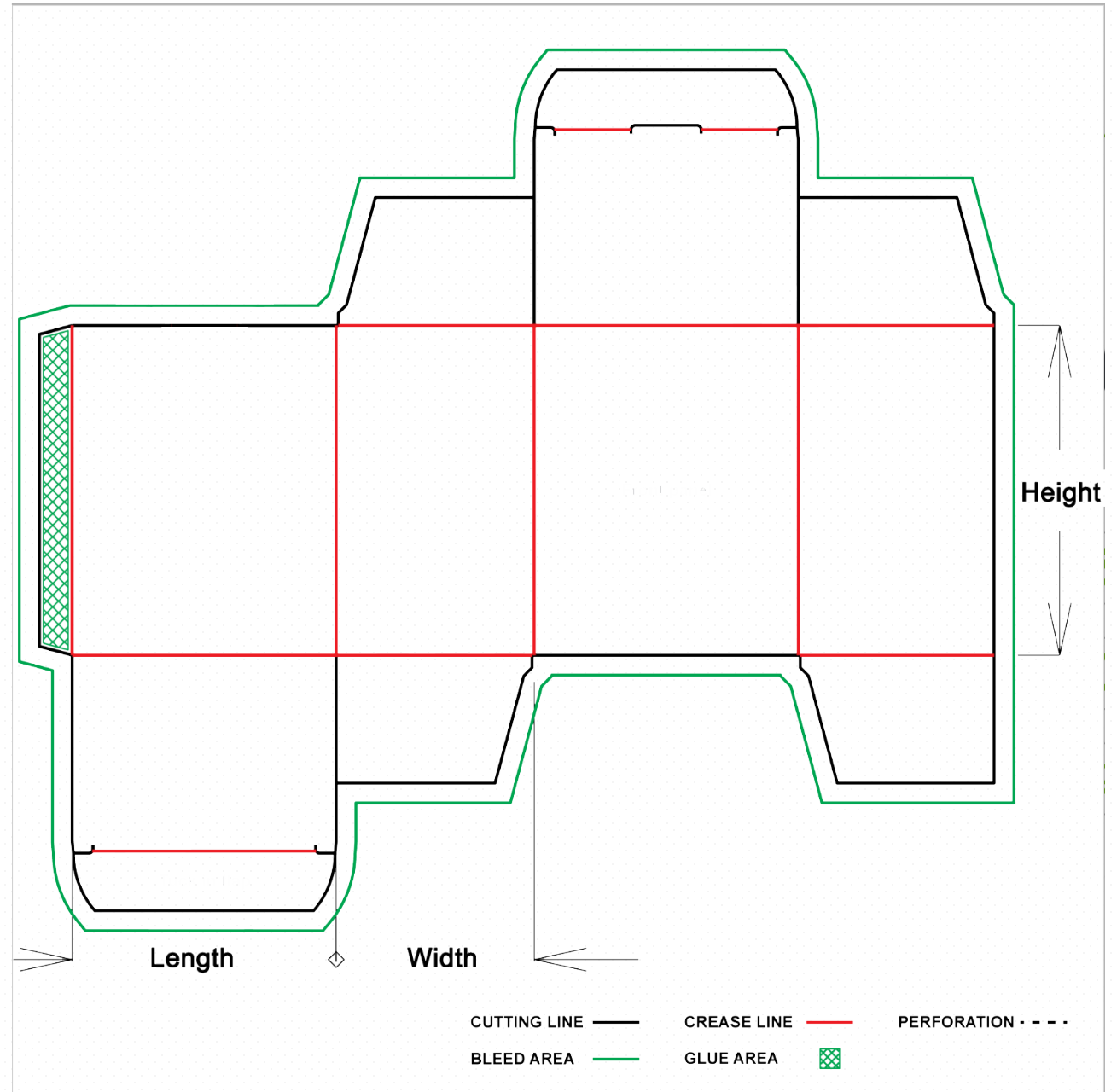
*A guide to keylines
Pakko 2018*

TUCK IN TOP & REVERSE BOTTOM

Tuck in Top & Reverse bottom box has the tuck flaps on both the top and bottom opening. And either the left panel or right panel is glued inside to build the box. The difference is that the top tuck flap is on the front panel while the bottom tuck flap is on the rear panel.

These boxes are great for cosmetic paper boxes, health and beauty product,s packaging boxes, pharmaceutical paper boxes, software paper boxes.

***NOT recommended for heavy products.**

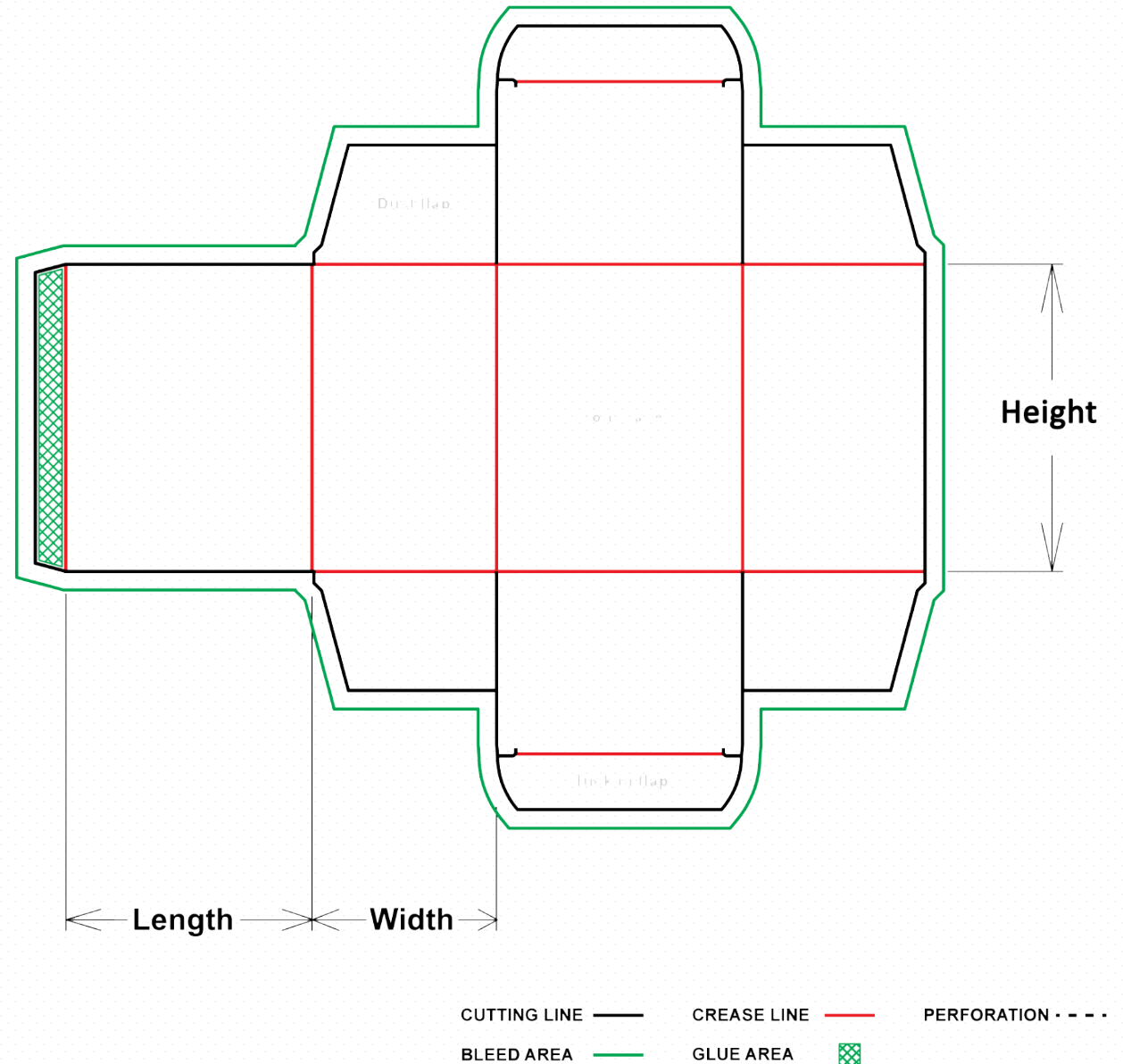


TUCK IN TOP & BOTTOM

Tuck in Top & Bottom box is similar to reverse tuck bottom. And either the left panel or right panel is glued inside to build the box. It is ideal for products which requires primary display cutout or with a PVC window. All closures are in the back.

These boxes are suitable for manual assembling or automation assembly line, commonly used for food, cosmetics, pharmaceutical and toy.

***NOT recommended for heavy products.**

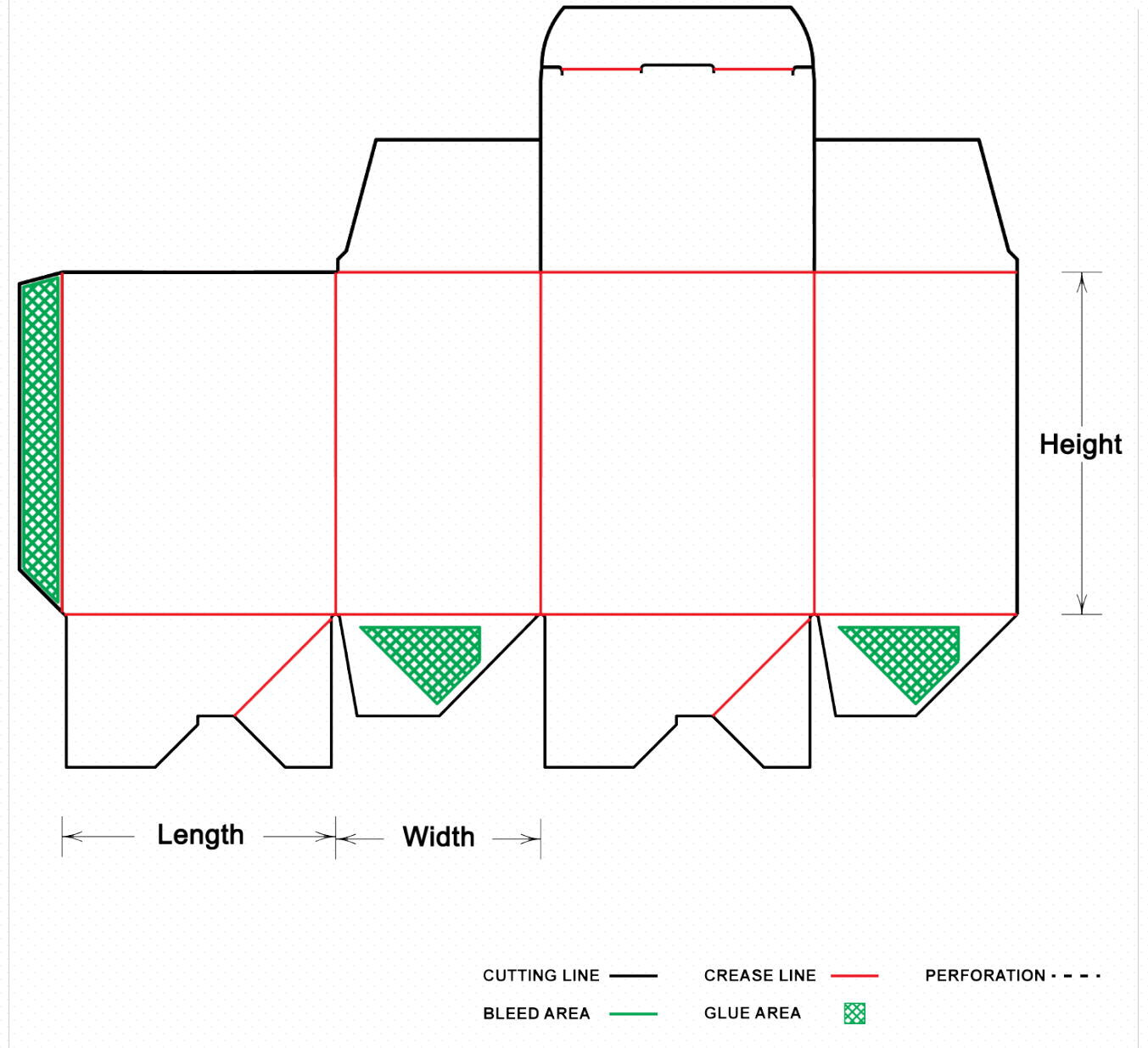


TUCK IN TOP & CRASH LOCK BOTTOM

Tuck in top & crash lock bottom is tuck top closure with automatic bottom closure, the top lid comes with friction lock and bottom is easy to assemble by squeezing the box and it pops into shape with bottom locked close.

It's suitable for broad range of relatively light products and commonly used for custom food boxes and medical boxes.

***NOT recommended for heavy products.**

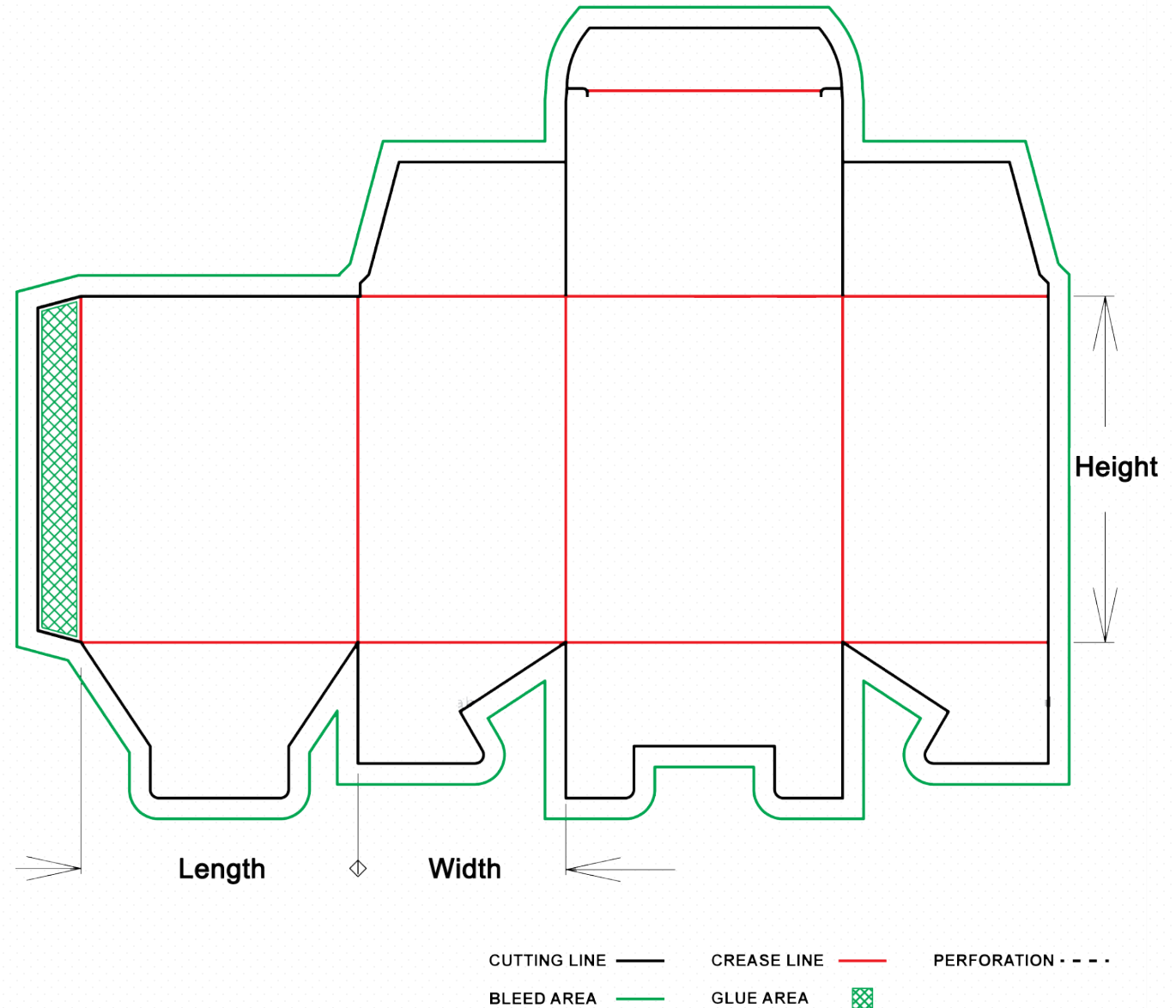


TUCK IN TOP & HAND LOCK BOTTOM

Tuck in top & hand lock bottom is also known as snap lock bottom or as 123 bottom, it is used almost exclusively as a bottom closure, large piece locking panel goes in first then two dust flap and small piece locking panel tuck underneath the large locking panel to complete sealing, often combined with tuck top closure. This is a hand erected and closed style.

Mostly used for cosmetics, food, medical, pharmaceutical and retail packaging.

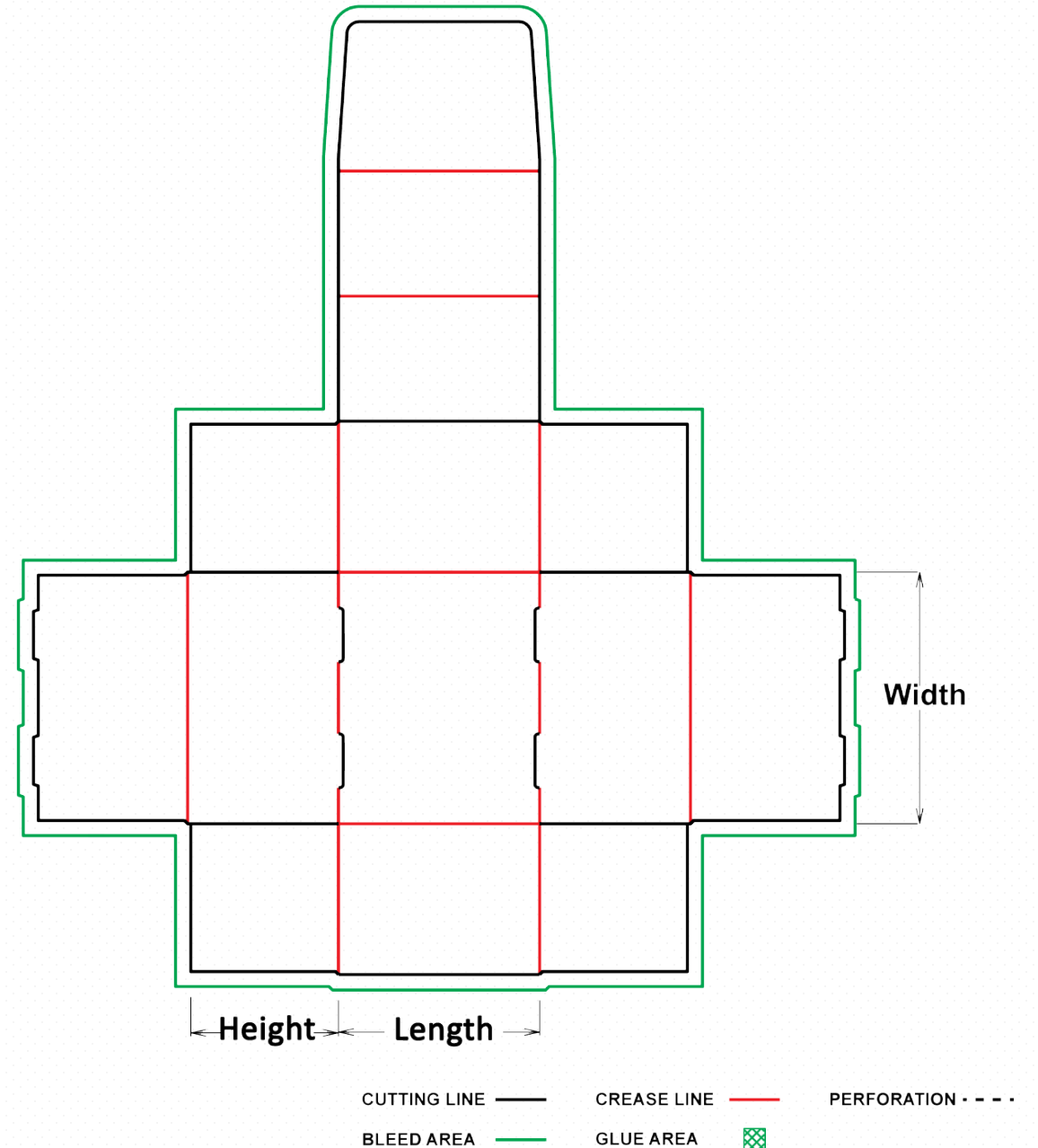
***NOT recommended for heavy products.**



TUCK IN TOP & SHELF DISPLAY

Tuck in top comes with double side wall which locks into position at the bottom panel, no glue required. The top panel is used as a tuck in closure. For shelf display, the top panel could be folded in half and used as a display panel.

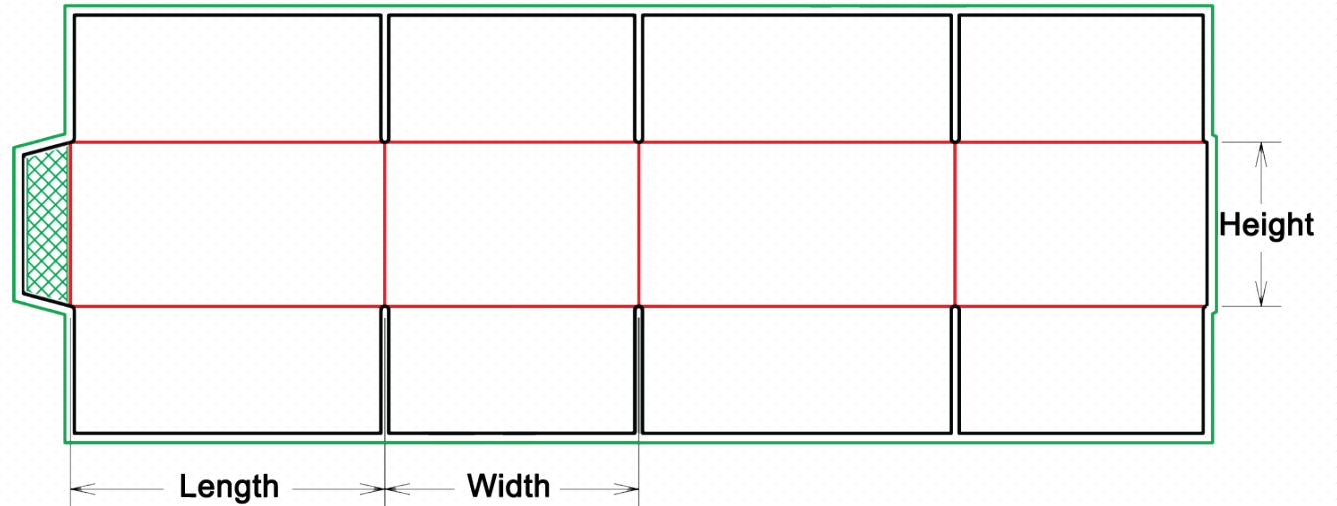
Ideally use for shipping purpose, counter display items, lollies, food, toys, light weight item.




REGULAR SLOTTED CARTON (RSC)

Also known as a shipper box. All flaps are the same and the two outer flaps (normally the lengthwise flaps) are one-half the container's width, so that they meet at middle of top panel when folded.

Most common box style suitable for retail product like food, shipping heavy items, packing items, used as an outer for other packaging.

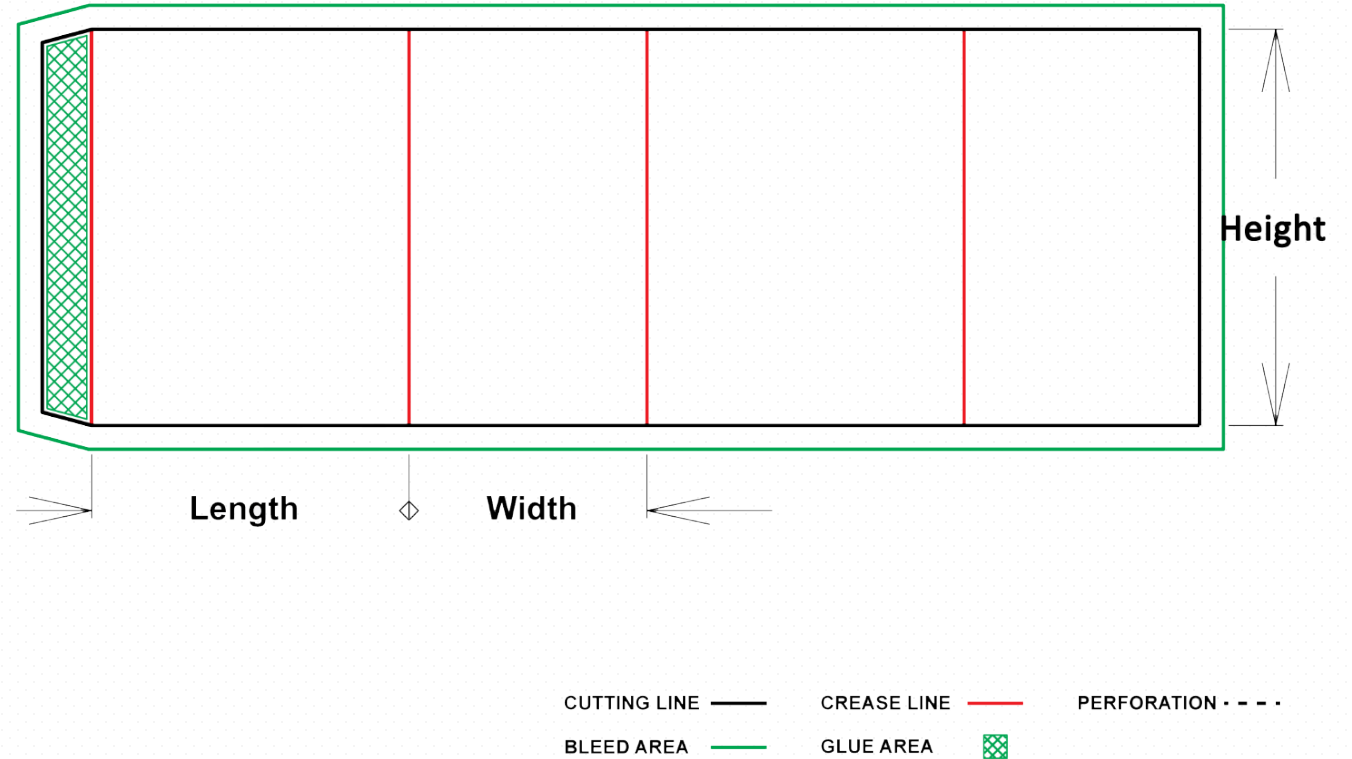


CUTTING LINE	—	CREASE LINE	—	PERFORATION	- - -
BLEED AREA	—	GLUE AREA			

SLEEVE

A sleeve is a straight line glued tube with no top and bottom closure, mostly used for trays already holding products or custom wrap around product, the open sides give an unobstructed view of the product, windows and slots can be customized to fit around product anomalies for secure fit.

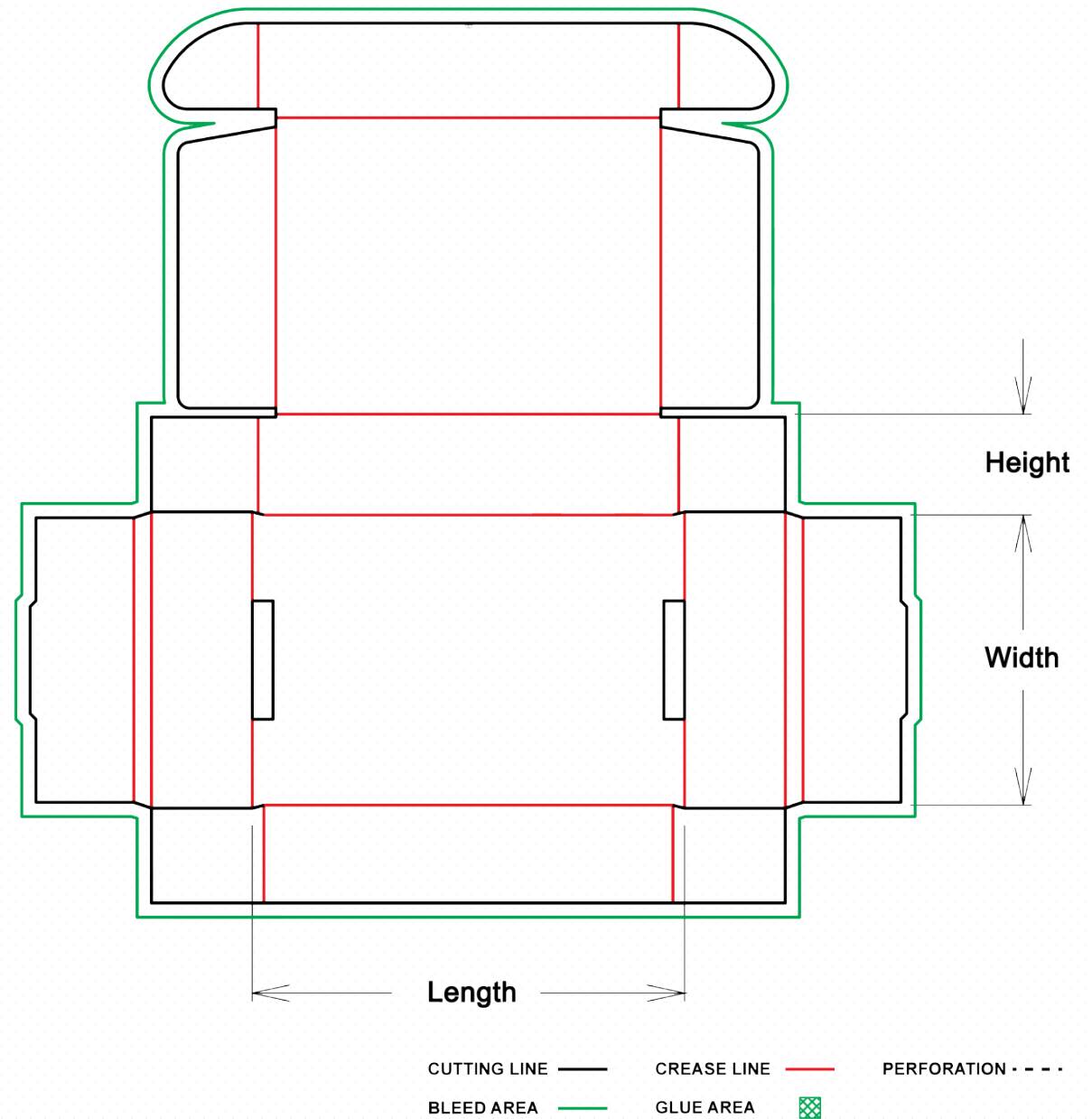
Mostly used for food, cosmetics, retail products.



SINGLE WALL MAILER WITH LOCKING FLAPS

Single wall mailer with Locking flap comes with double side wall locking in position on bottom panel, the locking flap on lid panel makes this structure extremely sturdy and sealing well.

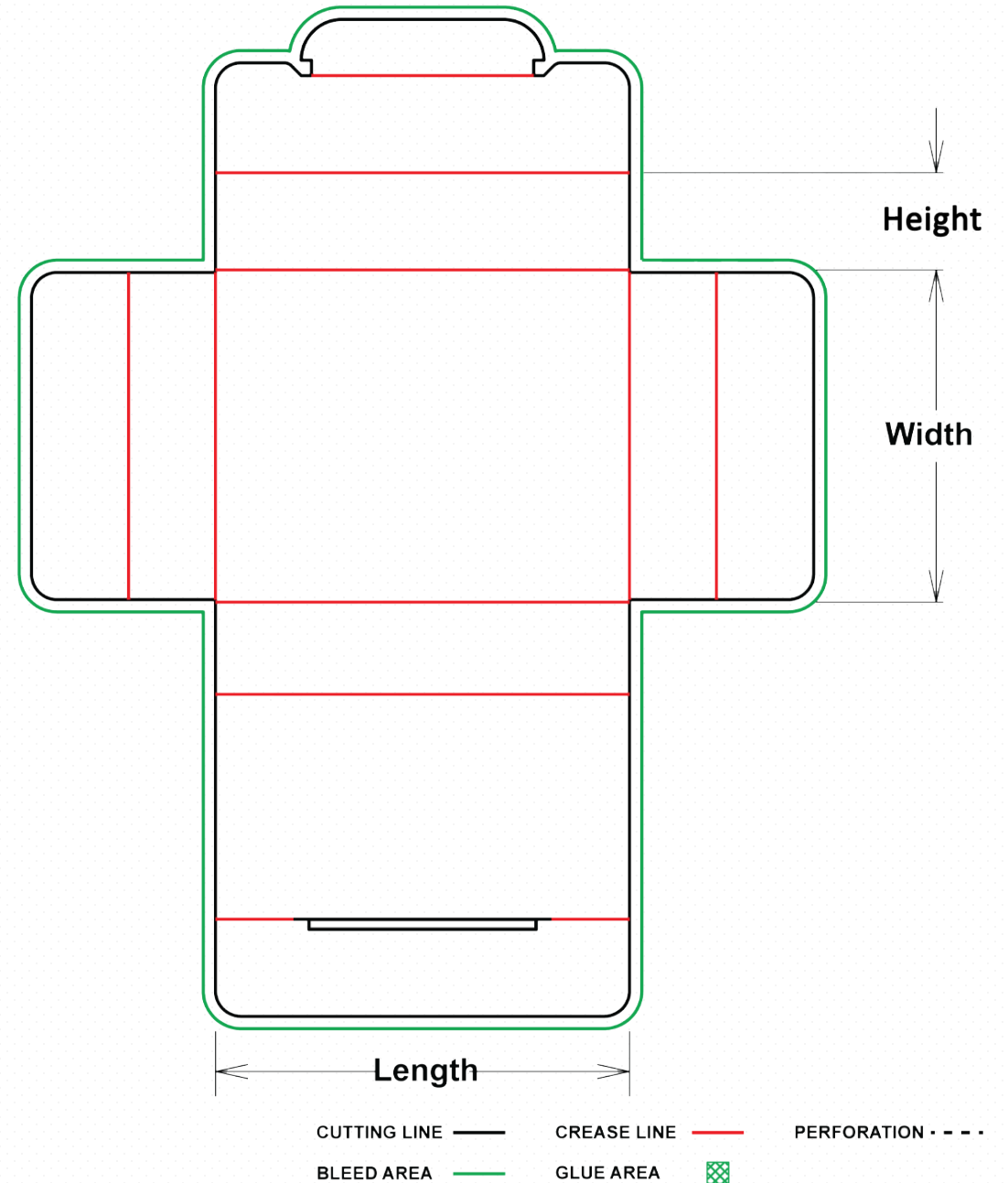
Ideal shipping purpose, commonly used for electronics & e-commerce business



T Mailer

T Mailer style is similar to folder style, used as a wrap up of product, no glue required, side panel goes down first, then front panel seal with lock and slot. This style comes with height which is suitable for broad range of relatively light products.

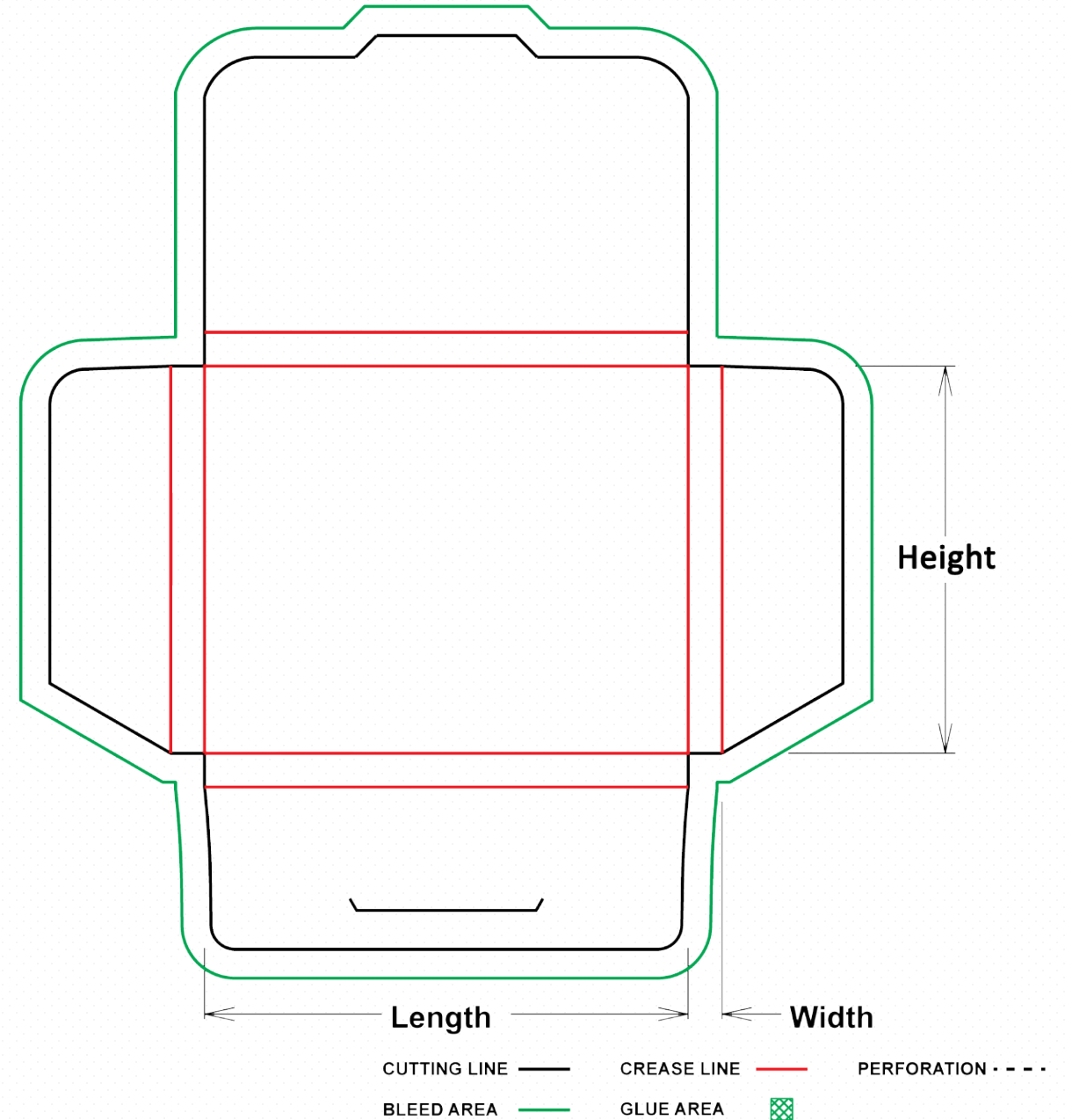
Ideally use for shipping purpose, office, stationery, documents and light weight items.



FOLDER WITH SNAP LOCK LID

Folder with snap lock lid requires no glue, two dust flap folds down first then two front panel with locking tab to seal it up, this style comes with height which is suitable for broad range of relatively light products.

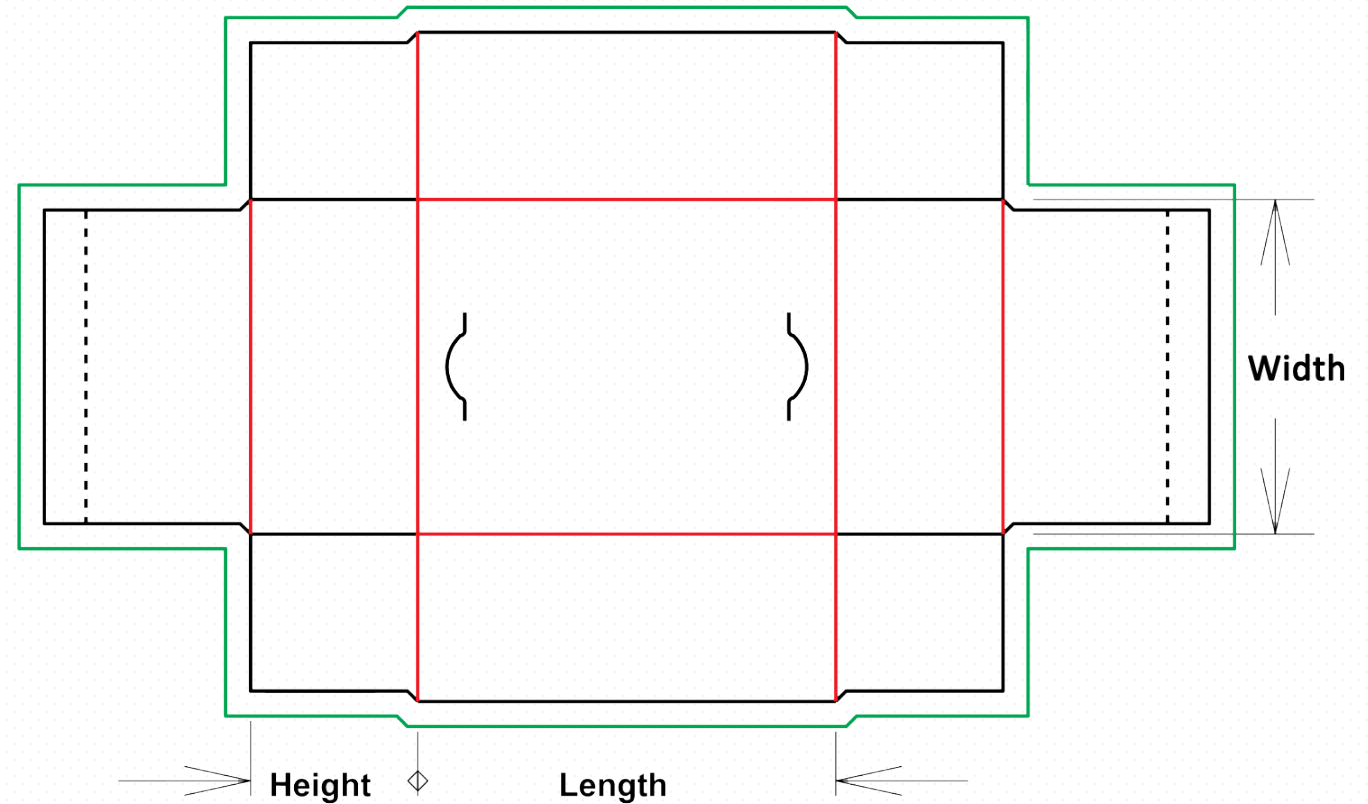
Commonly used for office, stationery, documents and light weight items



SELF LOCKING TRAY

Self lock tray comes with double layered side panel, requires no glue for closure, but a slot cut on the bottom panel for locking per side panel in position. Double side panel provide sturdy support for box structure, Ships flat. Hand erected

Ideal for office, stationery, filing documents, retail product like food, cosmetics, pharmaceutical products.



BOX STYLE: SELF LOCK TRAY
SKU: BC048

CUTTING LINE	—	CREASE LINE	—	PERFORATION	- - - -
BLEED AREA	—	GLUE AREA	■		