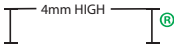


MINIMUM REQUIREMENTS ON ALL ARTWORKS

TEXT HEIGHT AND WIDTH

4MM* IF POSSIBLE,
ON ALL TEXT, INCLUDING
PARTS OF LOGOS, TM'S & ®

TEXT 

* Anything less than 4mm need bringing to Pakko's attention

Avoid white text (ie. reversed type)
on coloured backgrounds,
ensure that the text is bold to avoid
text filling in or breaking when printed



LINE WIDTH

1PT MINIMUM - 0.35mm
(Positive Print)

2PT MINIMUM - 0.7mm
(Reverse Print)

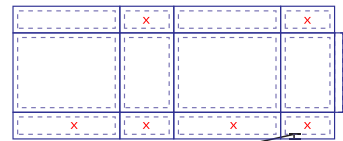
1PT KEYLINE TO SURROUND
HALFTONE AREAS,
ESPECIAL LY SMALLER ONES.



DISTANCE TO SCORES

TEXT, LOGOS ETC. TO BE A MINIMUM
OF 10MM FROM SCORES AND VENT HOLES.

BLOCK PRINT, ETC CAN GO OVER SCORES
BUT AVOID PRINTING BLOCKS OVER INSIDE FLAPS
AND BOTTOM FLAPS



10mm FROM ALL SCORES
 print over the Fold Lines this may result with a rough edge

TRAPPING

THE TRAPPING BETWEEN COLOURS NEEDS TO BE SHOWN ON ARTWORKS
THIS SHOULD BE A RECOMMENDED 3MM OVERLAP BETWEEN COLOURS

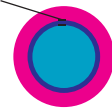
THERE SHOULD ALSO BE A RECOMMENDED 3MM GAP BETWEEN COLOURS IF NOT OVERLAPPING
WITH A MINIMUM OF 2MM*

* Anything less than 2mm need bringing to Pakko's attention

SPECIFIC: 1MM TRAPPING

RECOMMENDED GAP OF 2MM BETWEEN COLOURS IF NOT OVERLAPPING WITH A MINIMUM OF 1MM

3mm TRAPPING



ALSO REQUIRED ON ALL ARTWORKS

• DATE STAMP ON ALL ARTWORKS. / BOX MAKERS STAMP



000000

• BULLS EYES OR REGO MARKERS IF MULTICOLOUR

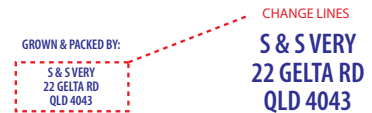


• IF CHANGES TO AN EXISTING STEREO, CHANGES MUST BE MARKED USING A DOTTED BOX AROUND CHANGED AREAS. THIS INCLUDES REMOVAL OF PRINT. MAKE SURE DOTTED LINES ARE IN A COLOUR THAT IS NOT CONTAINED IN THE ARTWORK.



• DIES SHOULD HAVE DIENAME, PRINT SIDE, FLUTE DIRECTION AND LEAD EDGE MARKED AS WELL AS DIMENSIONS.
DIE DRAWING SHOULD BE IN DIE INK.

• IF DOING AN ARTWORK THAT REQUIRES CHANGE LINES (SLUGS)
THE CHANGE LINES NEED TO BE INDICATED WITH A DOTTED LINE AND
BLOWN UP TO THE SIDE OF THE ARTWORK
5MM CLEAR SPACE IS REQUIRED AROUND EACH ONE.
OTHER PRINT CANNOT BE MOVED TO ACCOMMODATE THE CHANGE LINE



ANGLES & SCREEN RULINGS

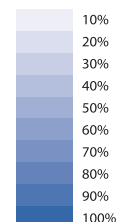
CYAN - 68°	SINGLE COLOUR IMAGES OR TONE TO USE BLACK OR MAGENTA ANGLES.
MAGENTA - 38°	
YELLOW - 83°	
BLACK - 8°	

- ALL JOBS PRODUCED AT 35 LPI

MINIMUM DOT

MINIMUM DOT FOR IMAGES, TONES AND VIGNETTES IS 10%

MAX DOT FOR FLAT HALFTONE IS 60%



BARCODES

TYPE OF BARCODE

ITF-14 or EAN-13 are the main barcodes used for corrugated board.
Other barcodes are not recommended.



NUMBER OF BARCODES

There need to be at least 2 barcode on the main or end panels



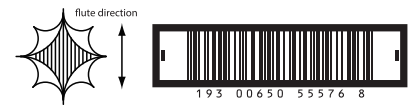
BEARER BARS

Boxes or Borders need to be around barcodes to ensure correct scanning.



PERPENDICULAR TO FLUTE

Barcode vertical bars to follow the direction of the box flute.
Also should be perpendicular to lead edge so stretch does not distort barcodes.



Lead Edge

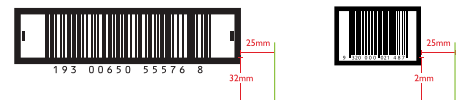
SIZE

ITF-14 should be no smaller than 62.5%.
EAN-13 should be no smaller than 195%.
Barcodes should not be distorted in any way.
If truncated (height reduced) it should be indicated on art.



LOCATION

Barcodes should be located 25mm from vertical crease and 32mm from the bottom crease to bottom of bars.



COLOURS

Barcodes should be printed in the darkest colour possible.
Do not use red or any light colour.

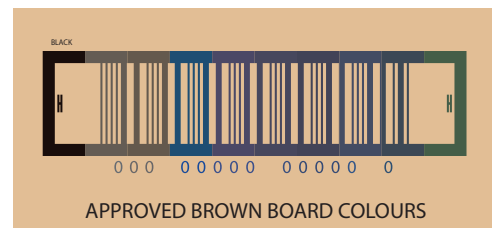
Wrong colours (won't scan)



Right colours (will scan)



APPROVED WHITE BOARD COLOURS



APPROVED BROWN BOARD COLOURS